



**VIDA MALL**

NEW CAPITAL

DOWN TOWN

**A LOCATION  
TO INVEST IN**



## ◆ Why to invest in New Capital ?

Invest in what is considered the biggest project in the world's 4th fastest growing economy in 2020!

The New Capital is now considered as the biggest economical & infrastructure project in the last few decades in the whole of Egypt.

So this is a golden opportunity to invest in the biggest sector of this booming economy.

Here are some reasons why it is considered so:

- ◆ The area of New Capital is 4X the area of Washington.
- ◆ 70 % of the city's energy will be renewable.
- ◆ Capital Park with 10 KM long which is bigger than the central park in New York by 2.5 times.
- ◆ The City can occupy 6.5 Million people.

## ◆ Why DOWNTOWN

The most premium location at the heart of the new capital on 570,000+ m2.

The Biggest Commercial and Administrative Area in New Capital.

You will be next to:

- ◆ El Masa Hotel
- ◆ Financial District
- ◆ Governmental District
- ◆ The Presidential Palace
- ◆ The Green River



## ✦ WHO WE ARE ?

Locations Developments was established to be the kernel between Deyar Masr and Al-Wejhaa to merge more than 10 years of experience in projects all over Egypt, especially in the New Capital.

We aim to create profitable investment opportunities, by providing credibility and unique experience in the commercial sector through our projects, Marvel Mall, VIDA Mall, and next soon projects in the New Capital.



**LOCATIONS**  
**DEVELOPMENTS**



## ✦ VIDA MALL

Investor or business owner, we believe that Vida Mall will be your ultimate choice in the Down Town!

Vida mall is uniquely designed to be the right place to invest in the downtown. We are developing VIDA mall based on our values and experience that will help the local and the international businesses to reach their business goals and overcome all the challenges.

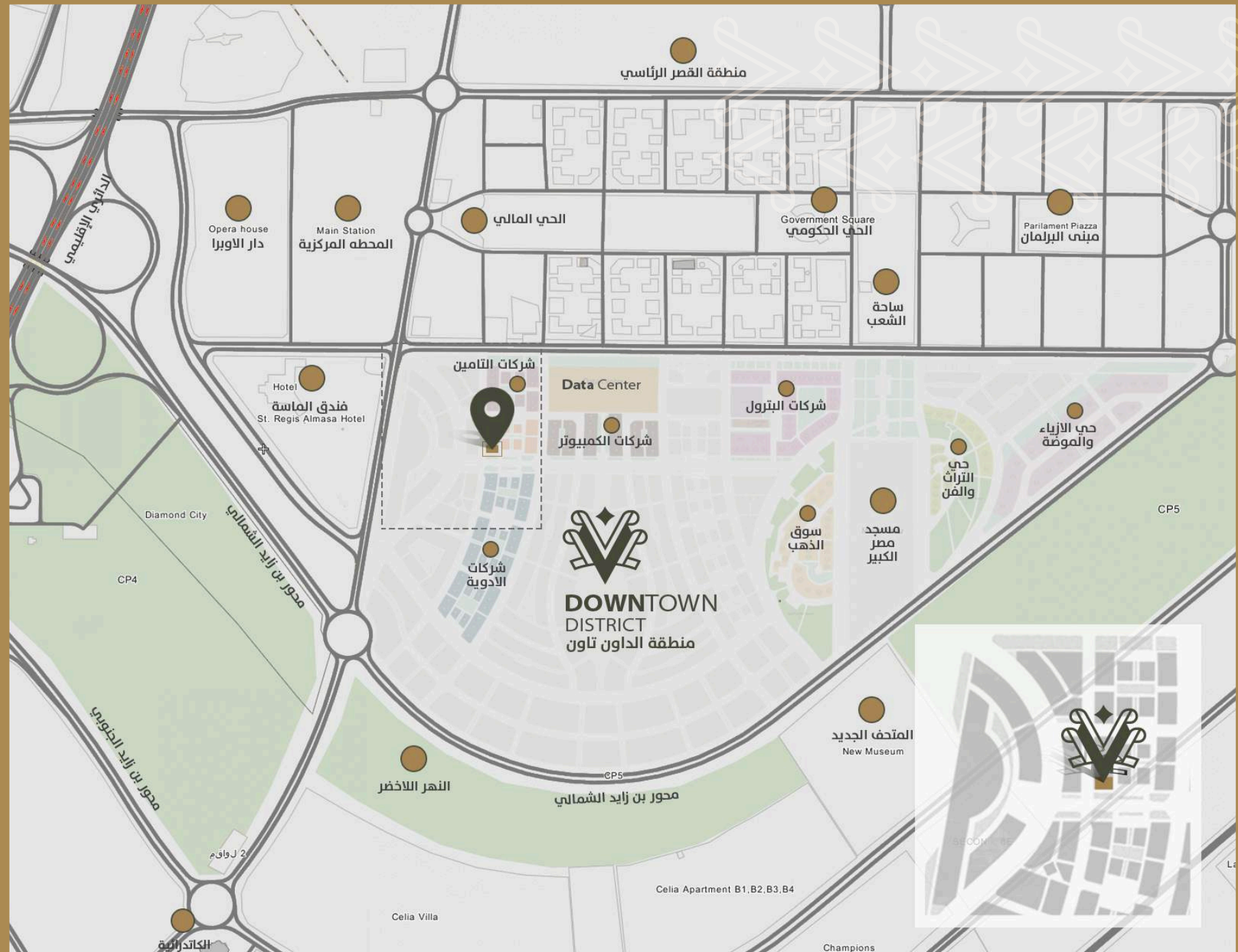




# VIDA MALL







منطقة القصر الرئاسي

Opera house  
دار الأوبرا

Main Station  
المحطة المركزية

الحبي المالي

الحبي الحكومي  
Government Square

مبنى البرلمان  
Parlament Piazza

ساحة الشعب

Hotel  
فندق الماسة  
St. Regis Almasa Hotel

شركات التأمين

Data Center

شركات الكمبيوتر

شركات البترول

حي الأزياء  
والموضة

حي التراث  
والفن

Diamond City

CP4

CP5

**DOWNTOWN DISTRICT**  
منطقة الداون تاون

مسجد  
مصر  
الكبير

سوق  
الذهب

شركات  
الأدوية

المتحف الجديد  
New Museum

النهر الأخضر

محور بن زايد الشمالي

محور بن زايد الجنوبي

2 لواقم

Celia Apartment B1, B2, B3, B4

Celia Villa

Champions

الكاتدرائية

# ◆ PROJECT FACILITIES



Elevators



Dancing Fountain



Food Court



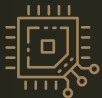
ATM center



Day Care Center



Kids Area



Smart Units



Sky Lounge



Solar Panels



High Speed Internet



24/7 Security System



Operating & Maintenance Company



Parking Floors



Electric Generators



Fire Fighting System

LAND AREA	2412 m <sup>2</sup>
HEIGHT	G + 8
FOOT PRINT	723.6 m <sup>2</sup>
ADMIN & CLINICS UNITS AREA	41 to 66 m <sup>2</sup>
COMMERCIAL UNITS AREA	39 to 91 m <sup>2</sup>
PARKING LOTS	111 cars
BUA	6512 m <sup>2</sup>



**COMMERCIAL**



**COMMERCIAL**

# Ground FLOOR (Commercial)



## GROUND FLOOR UNITS AREAS

Unit Code	Area	Terrace
G1	75	15.5
G2	70	18.75
G3	57	13.77
G4-Pharmacy	124	0
G5	78	18.76
G6	64	15.37
G7	62	14.78
G8	67	13
G9	91	87.26
G10	58	16.25
G11	57	16.08
G12	61	17.5
G13	72	16.1
G14	39	17.5
G15	39	17.5
G16	40	17.5
Total	972	200

GROUND FLOOR PLAN

# FIRST FLOOR (Commercial)



## FIRST FLOOR UNITS AREAS

Unit Code	Area
F101	40
F102	40
F103	59
F104	53
F105	75
F106	46
F107	46
F108	46
F109	46
F110	46
F111	58
F112	39
F113	44
F114	68
F115	55

Total 750



# ADMINISTRATIVE



**MEDICAL**



# SECOND FLOOR (Administrative / Medical)

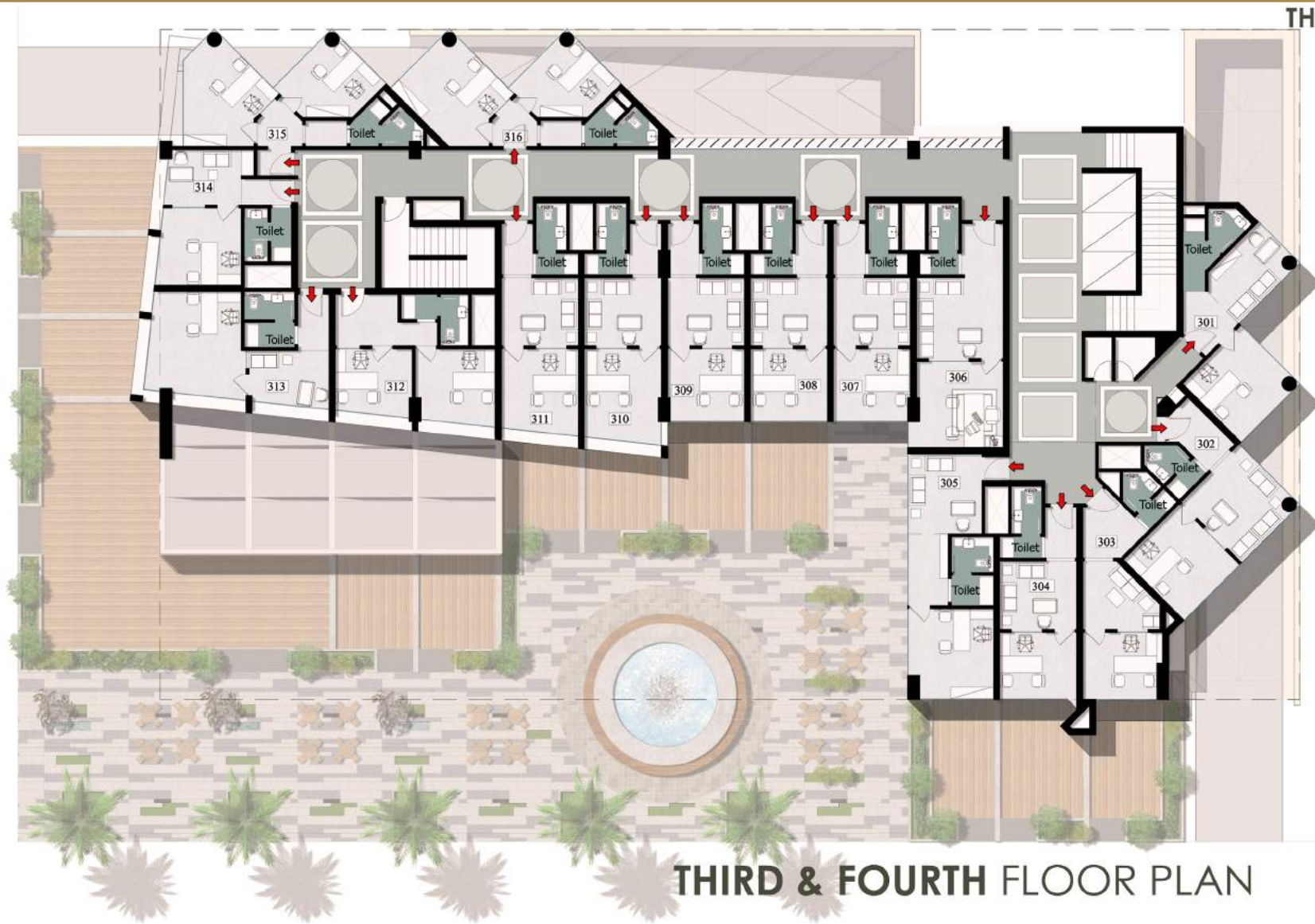


## SECOND FLOOR UNITS AREAS

Unit Code	Area
F201	51
F202	55
F203	46
F204	48
F205	59
F206	59
F207	46
F208	46
F209	46
F210	46
F211	46
F212	53
F213	65
F214	42
F215	59
F216	58

**SECOND FLOOR PLAN**

# THIRD & FOURTH FLOORS (Administrative / Medical)



**THIRD & FOURTH FLOOR  
UNITS AREAS**

Unit Code	Area
F301	51
F302	55
F303	46
F304	48
F305	59
F306	59
F307	46
F308	46
F309	46
F310	51
F311	49
F312	60
F313	65
F314	45
F315	59
F316	58
<b>Total</b>	<b>642</b>

**THIRD & FOURTH FLOOR PLAN**

# FIFTH FLOOR (Administrative / Medical)



## FIFTH FLOOR UNITS AREAS

Unit Code	Area
F501	51
F502	55
F503	63
F504	66
F505	54
F506	61
F507	59
F508	57
F509	51
F510	49
F511	54
F512	55
F513	45
F514	59
F515	57

Total Area: 845

**FIFTH FLOOR PLAN**

# SIXTH FLOOR (Administrative / Medical)

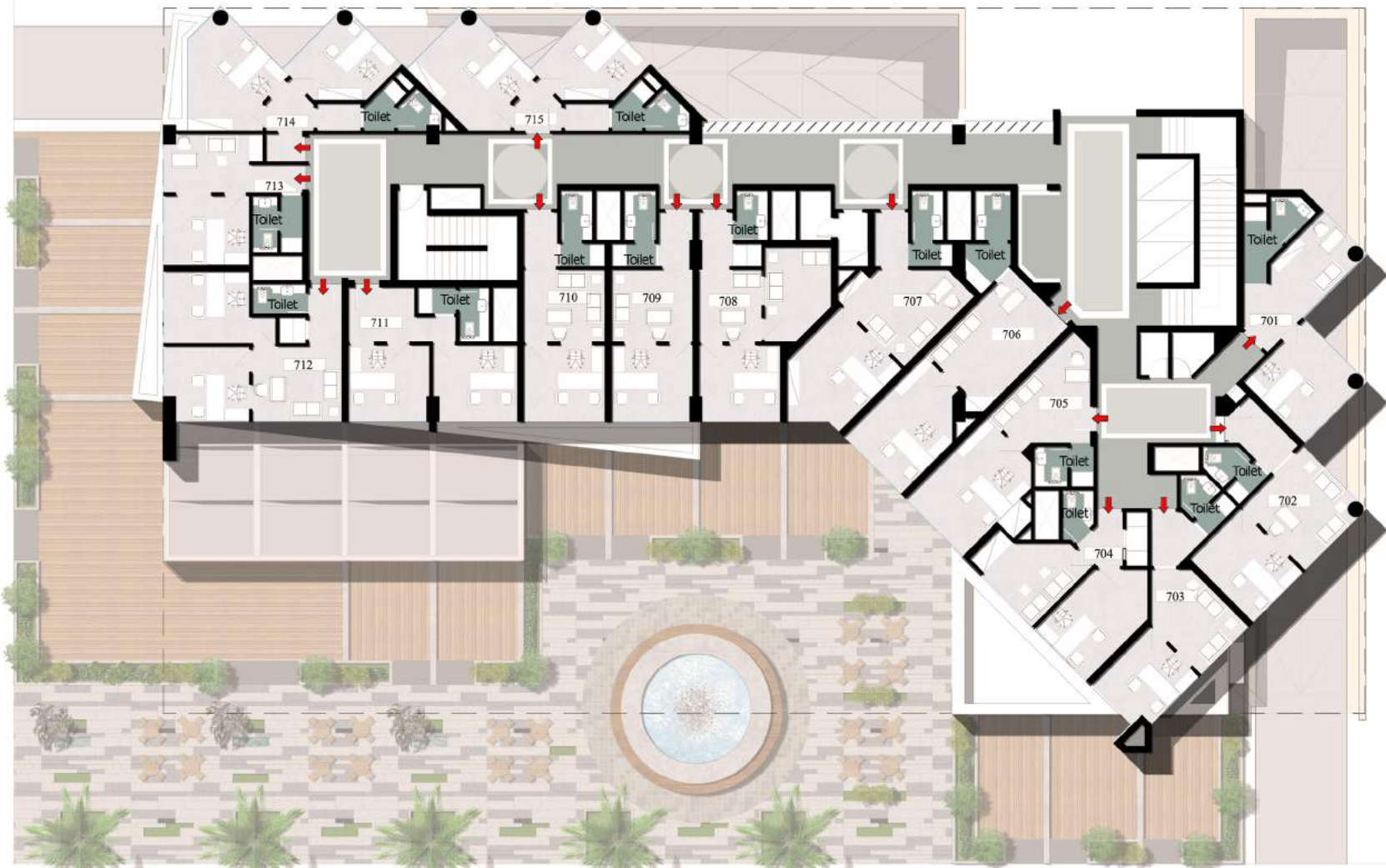


## 6TH FLOOR UNITS AREAS

Unit Code	Area
F601	51
F602	52
F603	43
F604	49
F605	54
F606	61
F607	59
F608	57
F609	51
F610	49
F611	54
F612	55
F613	45
F614	59
F615	57

SIXTH FLOOR PLAN

# SEVENTH FLOOR (Administrative / Medical)



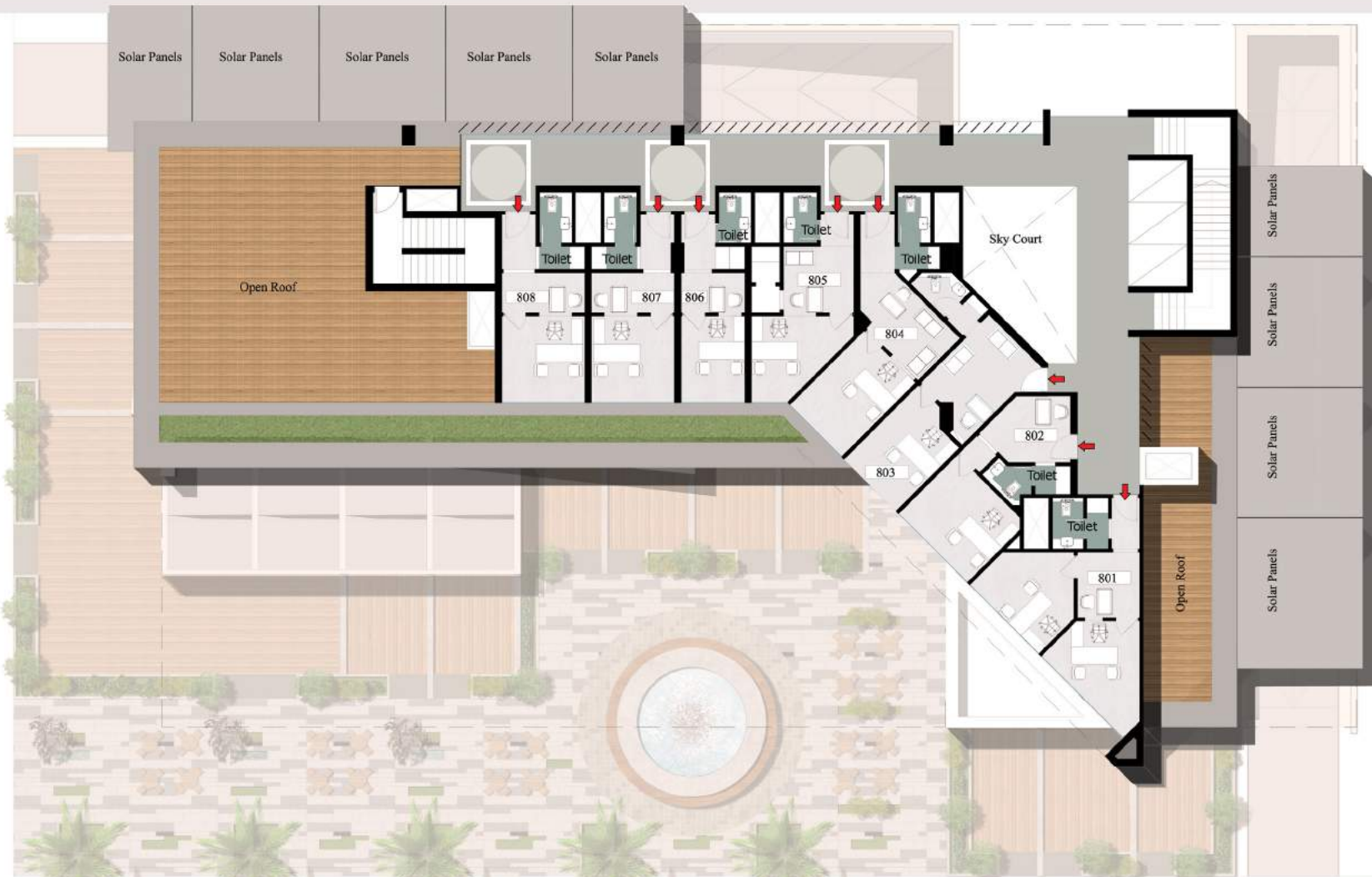
## SEVENTH FLOOR UNITS AREAS

Unit Code	Area
F701	51
F702	52
F703	43
F704	49
F705	54
F706	61
F707	59
F708	57
F709	46
F710	46
F711	53
F712	65
F713	42
F714	59
F715	58

F701-715  
Toilet

SEVENTH FLOOR PLAN

# EIGHTH FLOOR (Administrative / Medical)



## EIGHTH FLOOR UNITS AREAS

Unit Code	Area	Ter
F801	58	
F802	43	
F803	44	
F804	48	
F805	42	
F806	34	
F807	41	
F808	41	

Total 347

**EIGHTH FLOOR PLAN**

